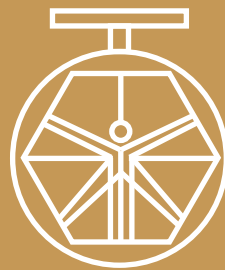


**GROUP 600
ACCESSORIES
MOD. 622/76**



**DAVINCI
VALVES™**

**TECHNICAL
DATA SHEET
WATER Series**

FLANGE ADAPTOR FOR PE/HDPE PIPES BIG SIZES

**DAVINCI
VALVES™**



**QUALITY
ASSUREMENT**

**DAVINCI
VALVES™**



**PRODUCT QT
ASSUREMENT**

**DAVINCI
VALVES™**



**COMPANY QT
ASSUREMENT**

www.davincivalves.com

18 Dongyu Street, Square One,
11th Floor 1101, Jinjiang District,
Chengdu, Sichuan CHINA

10F/Tower A, Billion Center,
1 Wang Kwong Road, Kowloon Bay
Kowloon HONG KONG

RESTRAINED FLANGE ADAPTOR FOR PE/HDPE/PVC PIPE BIG SIZES Ref.622/76

APPLICATION:

Water, HVAC installations, irrigation, industry, others

WORKING CONDITIONS:

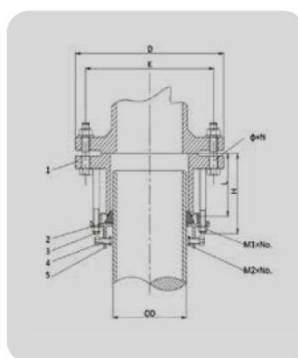
Working Temperature:
- 10 °C - + 120 °C. for EPDM
- 10 °C - + 82 °C. for NBR

STANDARDS:

Comply with EN545
Pressure Test: EN 12266-1.
Body: 16 bar.
Flange EN1092-2 PN10/PN16

GENERAL CHARACTERISTICS:

Size DN400 to DN600,
working pressure PN10/PN16
Powder Epoxy Cured coating 250 Mic



c	Name	Material
1	Body	Ductile Iron
2	Gasket	EPDM
3	Threaded tie rods	Gla.steel grade 4.8
4	Grip	zinc plated cast iron + CS 4.8
5	End ring	Ductile Iron

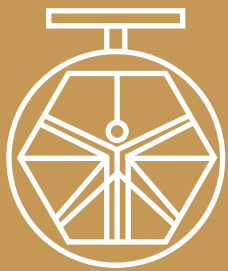
PVC/PE pipe OD	Outlet	A	H	L	h	OD	Bolt size	NOTE
350	355	520	470	100	170	28*16	M16*8	Straight
400	425	580	525	150	220	31*16	M16*8	Stepped
400	400	580	525	100	170	31*16	M16*8	Straight
450	455	640	585	100	170	31*20	M16*10	Straight
500	500	715	650	110	190	34*20	M16*10	Straight
600	630	840	770	110	190	37*20	M16*10	Straight
700	710	910	840	120	200	37*24	M16*12	Straight
800	800	1025	950	120	210	40*24	M16*12	Straight
900	900	1125	1050	140	240	40*28	M16*14	Straight
1000	1000	1485	1170	40	240	43*28	M16*14	Straight
1200	1200	1685	1390	150	260	49*32	M16*16	Straight

All the components can be substituted with equivalent or higher-class materials.

DAVINCI VALVES LTD, is constantly looking at all ways of improving our products and services related to the water, fire and industry sector and therefore we reserve the right to change, without prior notice, any of the data contained here. Please contact our Technical Sales Department for detailed advice.
© 2018 DAVINCI VALVES LTD.

www.davincivalves.com info@davincivalves.com +34 616553797 / +86 17340168233
18 Dongyu Street, Square One 11th Floor 1101. Jinjiang District, Chengdu, Sichuan Province, China

"For professionals who wants more"



DAVINCI
VALVES™