

MANHOLE COVERS AND GRATES CATALOGUE

“Let’s
equip
the
cities”

- < Manufacturing
- < Design
- < Integral production
- < Production Process Control
- < Quality and Delivery Inspections

DAVINCI
VALVES™



QUALITY
ASSUREMENT

DAVINCI
VALVES™



PRODUCT QT
ASSUREMENT

DAVINCI
VALVES™



COMPANY QT
ASSUREMENT





DAVINCI VALVES LTD is a company specialising in **civil engineering covering and closing products.**

Our business is based on fast custom service, offering the finest quality products to the various markets we serve. specialising in ductile and grey cast iron parts. Our presence throughout Europe allows us to detect new trends, grow, and offer our clients world-class service based in innovation and development.



Customise your covers by displaying on their top surface:

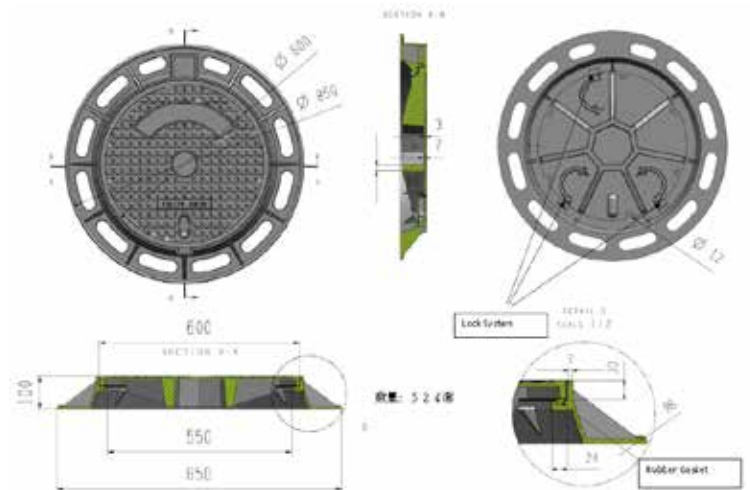
1. Your Logo
2. A text like Owner's name or Local Authority Identity
3. Or both

All creation possibilities of the customisation of the covers are possible and produced by **DAVINCI VALVES LTD.** Once the draft of the customisation is achieved and approved by the customer, within a week the quote is received. After final approvement and order placed, the customised badging plates are produced and customizes manhole covers cast in **DAVINCI VALVES foundry.** Just as you need.

DAVINCI VALVES LTD manufactures all of its products under the highest standards quality system, which makes us capable of designing, manufacturing and marketing cast iron pieces for global market. We offer ergonomic products reknown for their maximum resistance and safety. Likewise, our products are certified by the corresponding agencies in the market where we operate, guaranteeing compliance with UNE-EN124-2:2015 and all other standards and regulations.

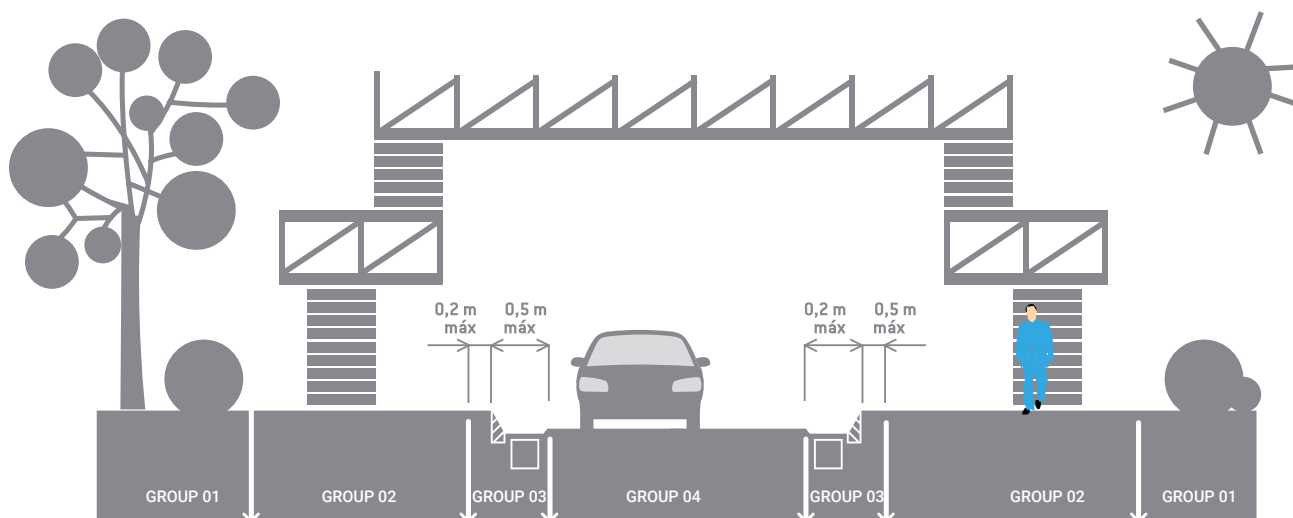
A complete set of tests, measures & controls on all aspects of performance & durability are provided through our **TESTING LABORATORY** such as:

1. Resistance to ultra-heavy traffic stresses
2. Stability
3. Quietness in use
4. Efficiency & durability of gaskets
5. Lock system optional
6. Hydraulic test in compliance with EN 124
7. Anti-skid tests & measures
8. Metrology
9. Metallography
10. Chemistry





DAVINCI VALVES LTD provides an entire range of products as per standard UNE-EN124-2-2015 in terms of cast iron manholes and grates for civil engineering works.



Location of groups acc. to their location on the public roads as per UNE-EN124-02:2015 definition.

GROUP 2

(Class B 125 minimum)

Car parks and pedestrian areas, where occasional vehicular access is likely.

GROUP 03

(Class C 250 minimum)

For covers on shoulders and ditch areas of streets up to 50 centimetres into the road and 20 centimetres towards the pavement, both measured from the side of the kerb alongside the road.

GROUP 04

(Class D 400 minimum)

Roads (including pedestrian ways) hard shoulders and parking area for all kinds of vehicles.

GROUP 05

(Class E 600 minimum)

Areas where heavy vehicles circulate, such as pavements at airports, docks, etc.

GROUP 06

(Class F900 minimum)

Areas subjected to extreme weight loads - ports and airports.



OPERATING STRESSES

Efficient management of sewer systems requires more frequent inspections and checks.

The handling of municipal castings designed without due care can lead to damage in the lumbar region of the back and spine.

DAVINCI VALVES LTD manhole covers are designed to facilitate opening and closing operations with a minimum of force and to provide service teams with more ergonomic working conditions.

Occasional Inspections	Periodic Inspections	Frequent Inspections
1. Opening Assistance system		
< None	Hinged mechanism Pins	Hinge
2. User Safety		
< Cover Positioning marker	Device ensuring holding of tool and guidance of cover	90° locking Opening to 130°
3. Opening Ergonomics		
< Bending of back and pulling < Lifting effort	Handling in 2 steps	1 single movement Standing position

DAVINCI VALVES LTD offers a very wide range of carriageway manhole covers in accordance with all the requirements of standards and satisfying the specific criteria of each place of installation.



TRAFFIC STRESSES

In addition to the group and class concepts specified in EN 124, it is recommended that specific traffic and operating stresses should also be taken into account in order to select the most suitable product.

The following three parameters:

1. Number of vehicles
2. Speed
3. Type of vehicles (cars or heavy vehicles using the carriageway are combined and contribute to the definition of the concept of the type of traffic).

Type of Traffic	Nr of Vehicles	Speed	Type of vehicles
< Intense	High	Authorized for Large Urban Roads	Regular Use by heavy vehicles
< Normal	Irregular	Stabilized Urban Speed	Essentially light vehicles or transit of heavy vehicles
< Low	Low	Limited Speed Traffic	Occasional truck



ADDITIONAL SERVICES OFFERED

SALES DEPARTMENT

Our extensive and experienced sales team, both regionally and internationally, offers quick solutions to our customers' needs.

ENGINEERING DEPARTMENT

We specialize in custom designs, offering effective and innovative solutions adapted to the specific situation of each project.

AFTER-SALES SUPPORT

At the completion of each project, we keep at our customers' disposal a technical guarantee for any incident that may arise on-site, by providing the technical assistance needed to resolve the situation.

MANHOLE COVERS AND GRATES IN DUCTILE SMELTING

Ductile smelting is a kind of iron smelting alloyed with graphite in the shape of nodules. It is an extremely durable material that ensures high fatigue resistance. For this reason, the products manufactured in ductile smelting withstand high loads, such as the passage of heavy vehicles. An ideal material for the pipeline construction and covering and closing devices in areas of high circulation.*



Kerb Gully



Scuppers



Water Cut Grates



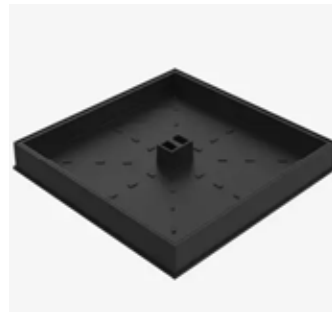
Scupper Grates



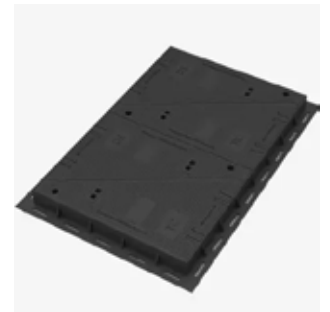
Grates with channels



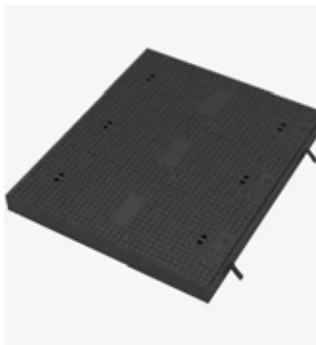
Hydraulic Manhole Covers



Concrete refillable manhole Covers



Telecommunication manhole Covers



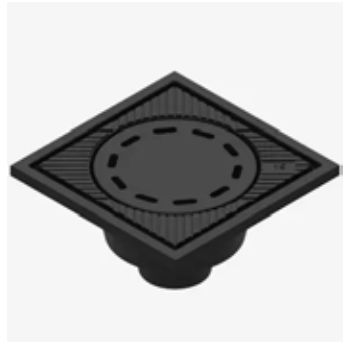
Telephony manhole covers



Registry manhole covers and rings



Covers and section frames and irrigation



Trap doors and gully traps



Grates with frame in ductile smelting

High absorption in drains and sewers



Concave scupper grate and frame



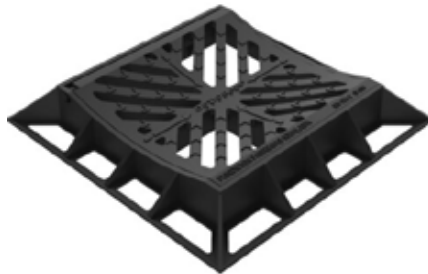
Square Folding Scupper grate & frame



Scupper Full Grate and Frame



Square Concave folding scupper grate and frame A



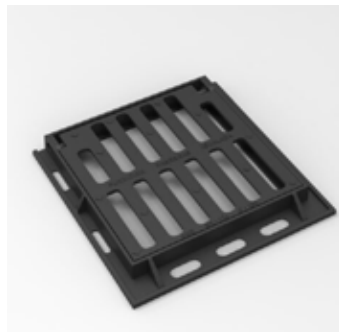
Square Concave folding scupper grate and frame B



Scupper Grate Frame Water Reversible



Grate and Frame type for 25TM



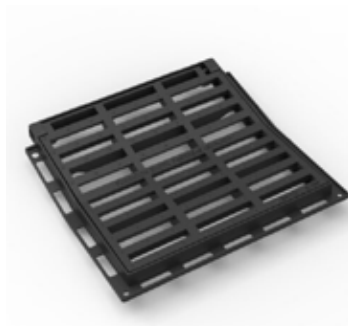
Flat Grate and Frame for 250 KN Breaking load



Square folding scupper grate in V



Square folding scupper grate for 25 TM 500x500



Concave square grate and frame 50x50



Grate and concave frame 570x370x50 mm for 25 Tn



Folding Scupper Grate Reversible



Folding Grate and Frame Anti-theft PO10N



Foldind Grate and Frame Anti-theft PO10 N B



Grate and frame of folding scupper of 700x398



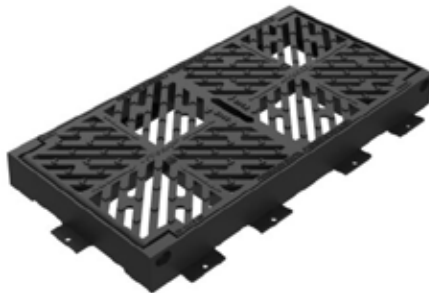
Folding grate and frame anti-bikes type Impu



Folding grate and frame anti-bikes type Impu 840x340x70



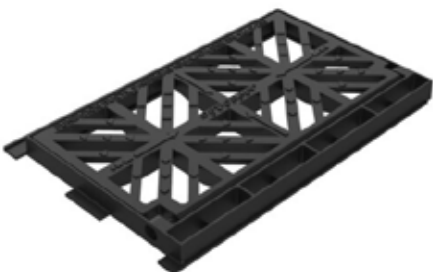
Scupper grate and frame model meridiana



Maximum absorption grate and Frame



Folding grate and frame type Teide in ductile casting for 25 TM



Grate and Frame abatible Maximum Absorption



Blind Manhole cover and folding frame type meridiana



Concave grate with folding frame for 25KN

Assemblies for the pipelines registration

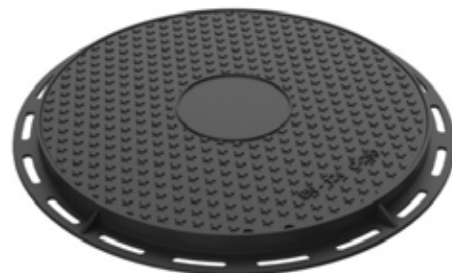
Folding and articulated manhole covers, compacts and with grate*



Articulated Square Manhole C cover for 40TN



Articulated Square Manhole Cover for 90TM



Manhole Cover ø570 and ring ø670



Grate Cover ø650 mm and frame ø850 mm



Manhole cover with seat of cover and machining around



Cover ø570 and ø670 mm ring in ductile cast iron for light traffic



Folding Manhole Cover and ring of registry ARGELIA



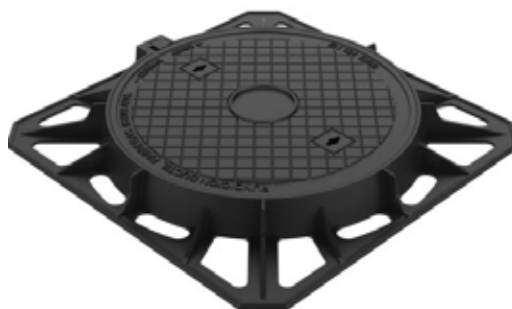
Manhole Cover ø650 mm and frame ø850x82 mm



Manhole Cover ø580 and frame ø720 mm



Manhole Cover ø635 mm and frame 850x850x100 mm



Manhole Cover ø800 mm and frame 1000x1000 mm



Manhole Cover ø635 mm and frame ø850x100 mm



Manhole Cover $\phi 650$ and
apparent frame 850×850 mm



Manhole Cover $\phi 650$
and apparent frame 850×850 mm



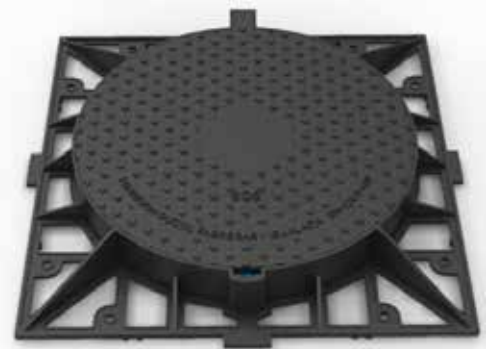
Cover and folding pit ring with
closure for 40 tons complies with EN 124-2



Manhole Cover $\phi 635$ mm
and frame $\phi 850 \times 100$ mm

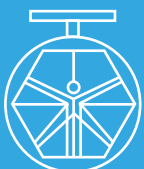


Manhole Cover and frame of 800×800



Folding Manhole Cover and ring
of registry Morocco

** Just an illustrative range of Davinci Valves products. Please ask for your own product specifications and needs and our technical department we'll be pleased to get all to you as soon as possible at: valves@davincivalves.com*



**DAVINCI
VALVES™**

"For professionals who looks for more."



HEAD OFFICE:

18 Dongyu Street,
Square One 11th Floor 1101,

Jinjiang District, Chengdu, Sichuan
CHINA

CALL US FOR INFORMATION:

China: +86 17340168233 / 19302892712

SEND US AN EMAIL TODAY:

valves@davincivalves.com

