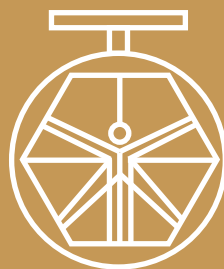


**GROUP 800  
KNIFE VALVES  
MOD.890A/112**



**DAVINCI  
VALVES™**

**TECHNICAL  
DATA SHEET**  
**INDUSTRY Series**

**BIDIRECTIONAL SEALING  
GROOVELESS WEAR-RESISTANT  
KNIFE VALVE**

**DAVINCI  
VALVES™**



**QUALITY  
ASSUREMENT**

**DAVINCI  
VALVES™**



**PRODUCT QT  
ASSUREMENT**

**DAVINCI  
VALVES™**



**COMPANY QT  
ASSUREMENT**

[www.davincivalves.com](http://www.davincivalves.com)

18 Dongyu Street, Square One,  
11th Floor 1101, Jinjiang District,  
Chengdu, Sichuan CHINA

10F/Tower A, Billion Center,  
1 Wang Kwong Road, Kowloon Bay  
Kowloon HONG KONG

## BIDIRECTIONAL SEALING GROOVELESS WEAR-RESISTANT KNIFE VALVE ref.890A / PN 10-16



**MODEL:** 890A

**WORKING PRESSURE:**

DN50-DN100 10bar  
DN125-DN200 8bar  
DN250 5bar

**STANDARDS:**

Type: Wafer  
Design: MSS SP-81  
Flange Standard: PN10/PN16 150LB TE TD  
Face to Face: MSS SP-81  
Testing Standard: API-598  
Operation: handwheel, electric, pneumatic, hydraulic, sprocket, electro-hydraulic, gear

**GENERAL CHARACTERISTICS:**

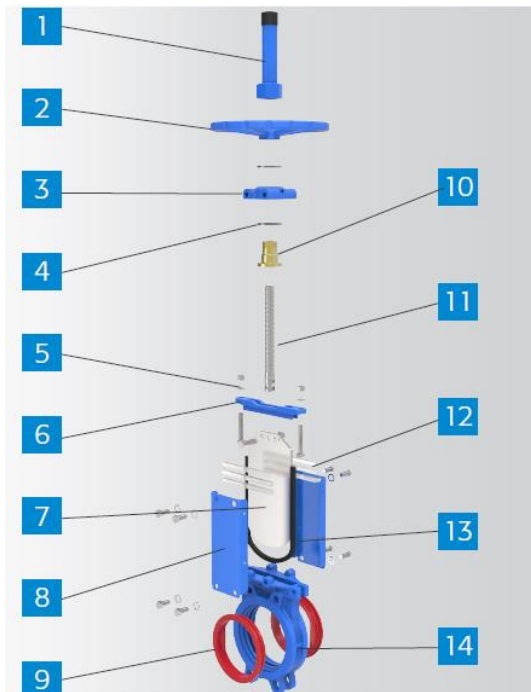
Main Material: GGG40  
Wedge Material: SS316L, SS304  
Sealing Material: EPDM  
Packing: Aramid fiber, high-water-based rubber packing graphite wheel  
Applicable medium: Applicable for coal in power plant, slag discharge, sewage treatment, food, paper making, medicine, petroleum and chemical industry, water, Oil, steam, connecting or cutting grout, gold powder, ores, slag, coal, pulp, wood pulp, tailings, fibers, dust, chemicals, sewage treatment, sedimentation tanks, asphalt, bunker export, fruit juices, cereals, slaughter plant waste and other media.

**FEATURES:**

- ✚ Bi-directional seal
- ✚ 1PC Body design
- ✚ Full port design
- ✚ Polyurethane Seat cover
- ✚ 2PC Strong yoke design
- ✚ Mixed with a variety of materials packing

**Product Description:**

890A Series No groove bi-directional seal knife gate valve, cast iron body with the overall structure knife gate valve, including valve' body, gate, and U-shaped flexible seal at the bottom of the body with grooves and polyurethane Seat cover. When the valve is closed, the bottom of the gate edge contact with the seal and then compress the seal into the groove in the body and sealed gate realization; when the gate opens, separate gate from the bottom edge of the seal, seal will bounce to same level as groove, which will prevent the media sediment accumulated in the body cavity of the groove, no clogging, no residue, pipe easy to clean, so as to effectively improve the sealing effect knife gate valve to prevent leakage when the valve is closed.



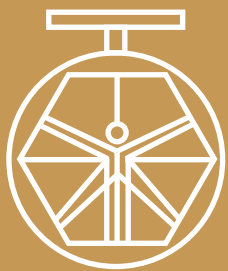
No.	Part	Material	QTY
1	Stem Cover	Steel	1
2	Hand Wheel	GGG40	1
3	Yoke Head	GGG40	1
4	Bearing	Gcr15	2
5	Boly & Nut	Fe+Zn/SS304	N
6	Packing Gland	WCB	1
7	Disc	SS304/SS316L	1
8	Yoke	A3	2
9	Seat Container	Polyurethane	N
10	Stem Nut	Cu48	1
11	Stem	2Cr13/SS304	1
12	Packing	Aramid PTEF	3-5
13	U Seat	EPDM	1
14	Body	GGG40	1

All the components can be substituted with equivalent or higher-class materials.

DAVINCI VALVES LTD, is constantly looking at all ways of improving our products and services related to the water, fire and industry sector and therefore we reserve the right to change, without prior notice, any of the data contained here. Please contact our Technical Sales Department for detailed advice.

© 2018 DAVINCI VALVES LTD.  
www.davincivalves.com info@davincivalves.com +34 616553797 / +86 17340168233

*"For professionals who wants more"*



DAVINCI  
VALVES™